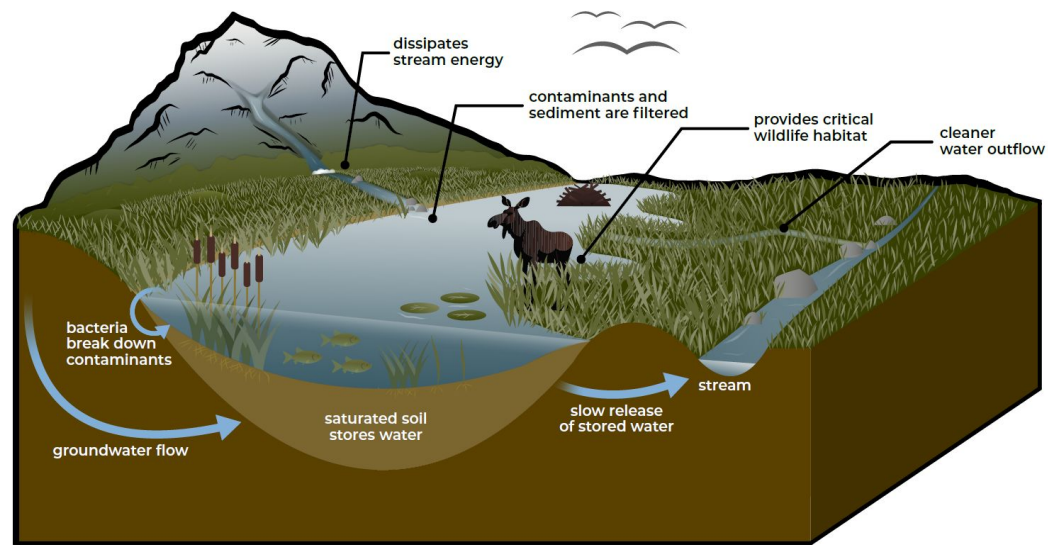


# **Hydric Spaces in High Places: Assessing Utah's Montane Wetlands**

Elisabeth Stimmel

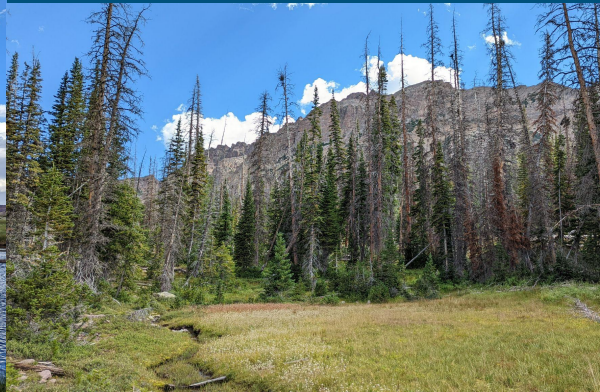
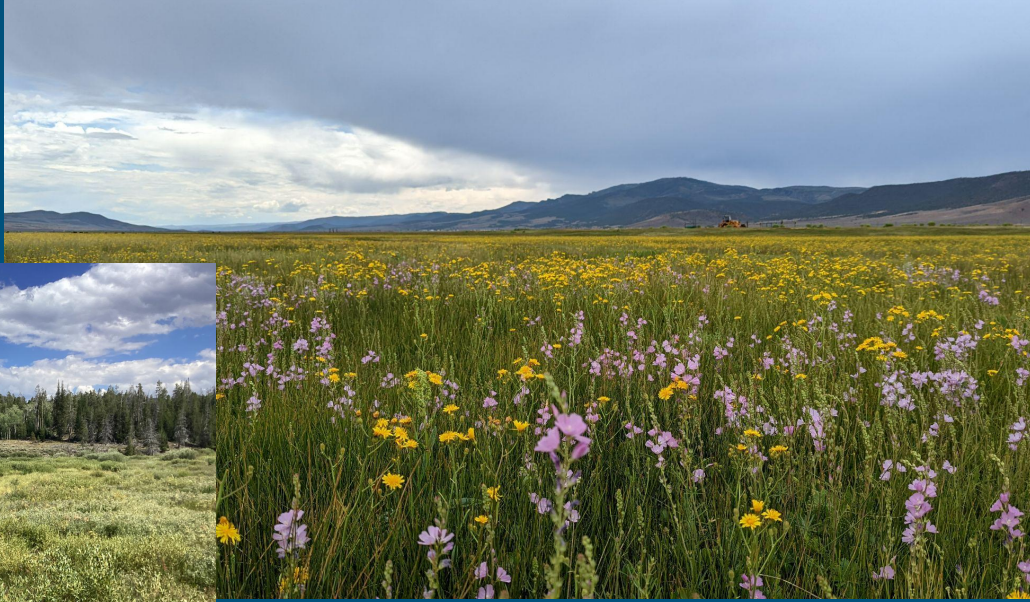
Utah Geological Survey  
Groundwater & Wetlands Program







# Utah's Montane Wetlands





# Threats



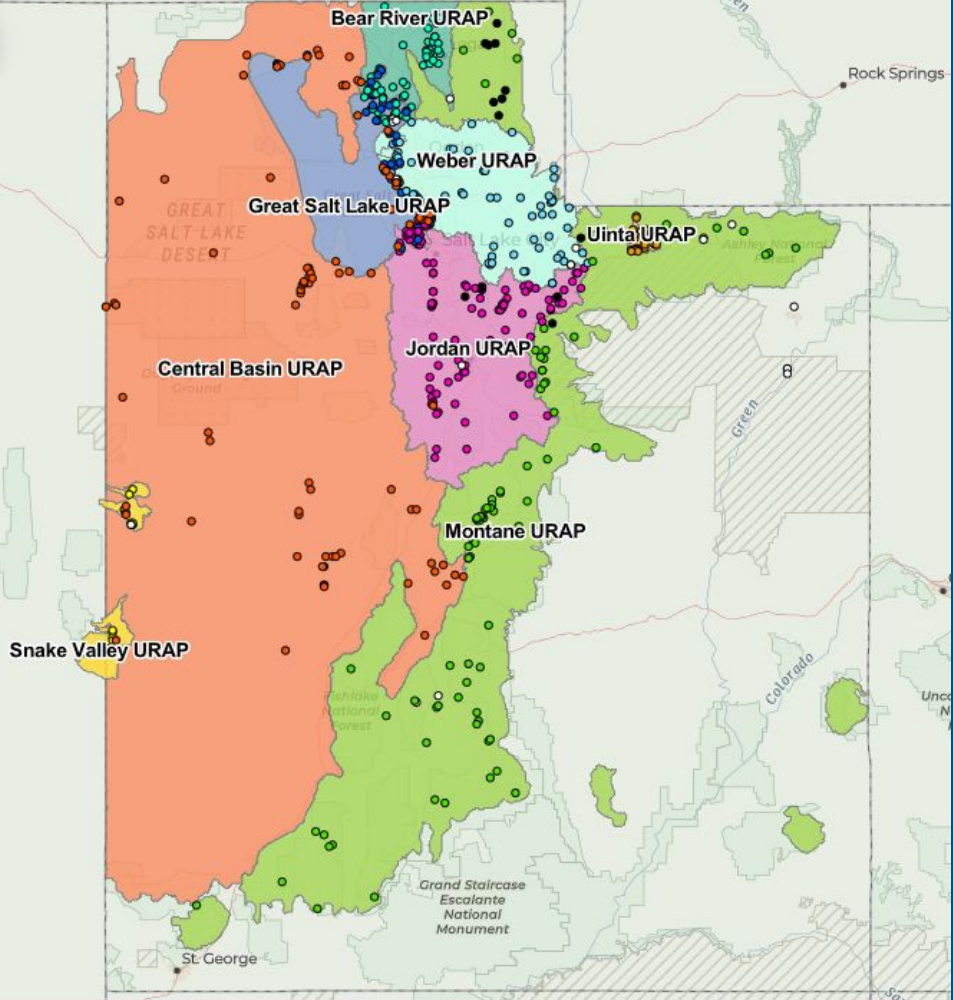


### Survey Sites

- Bear River URAP
- Boreal Toad
- Central Basin URAP
- Great Salt Lake URAP
- Jordan URAP
- Montane URAP
- National Wetland Condition Assessment 2016
- Snake Valley URAP
- Uinta URAP 2014
- Weber URAP

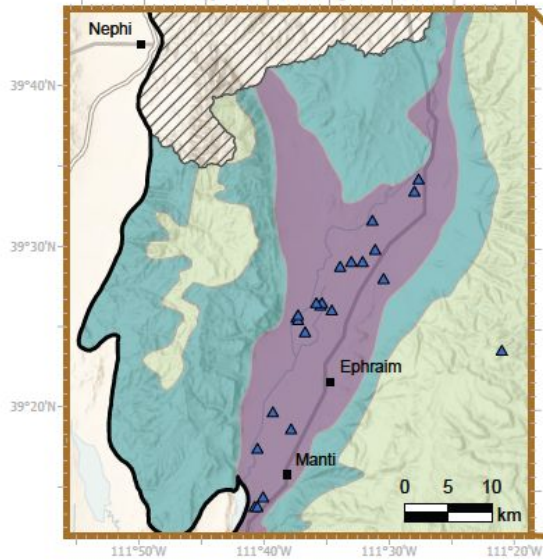
### Wetland Assessment Projects

- Bear River URAP
- Central Basin URAP
- Great Salt Lake URAP
- Jordan URAP
- Montane URAP
- Snake Valley URAP
- Weber URAP
- Uinta URAP



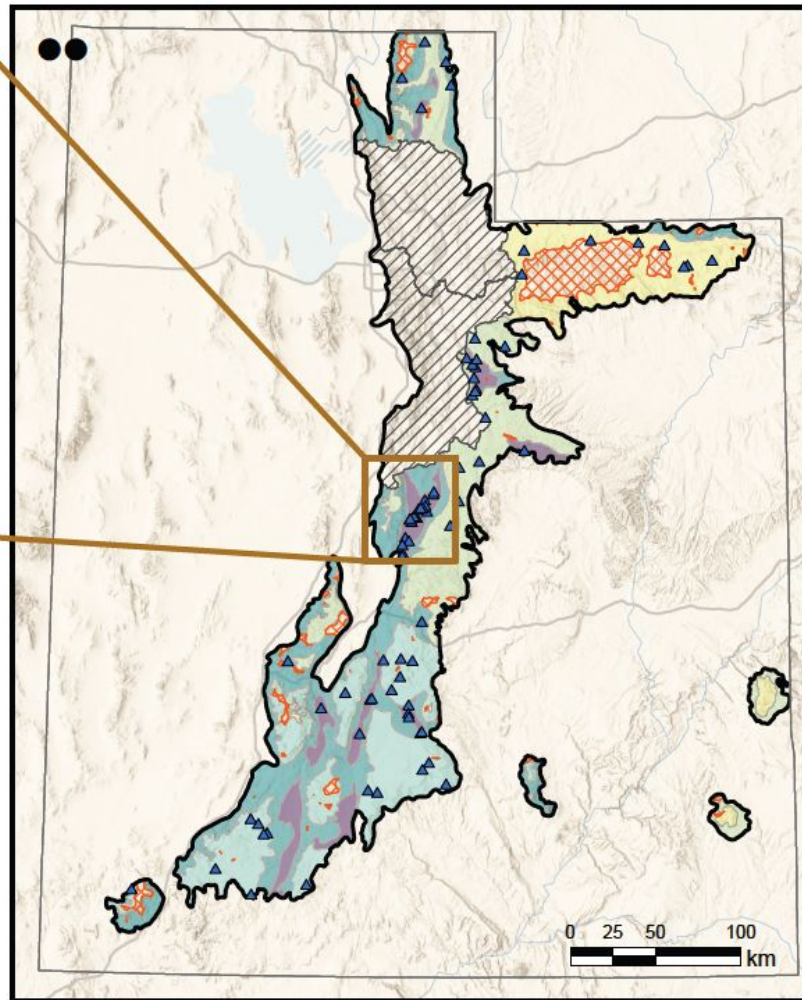


## Sanpete Valley Inset



## Explanation

- |                         |               |
|-------------------------|---------------|
| ■ City                  | <u>Strata</u> |
| ▲ Survey site           | Valleys       |
| □ Ecoregional boundary  | Foothills     |
| ▨ Previous study area   | Plateaus      |
| ▤ Area >3 km from roads | Montane       |
|                         | Subalpine     |



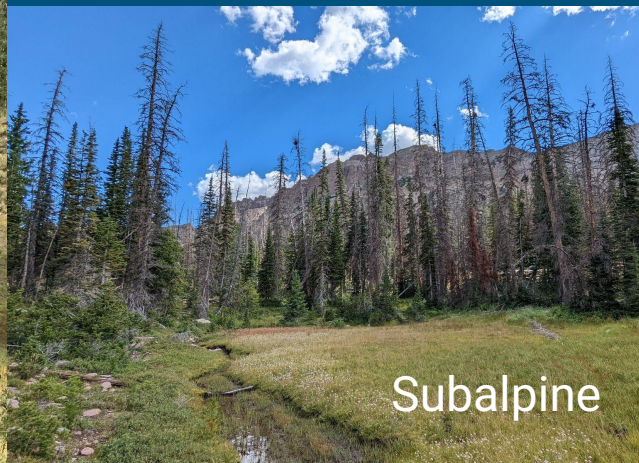




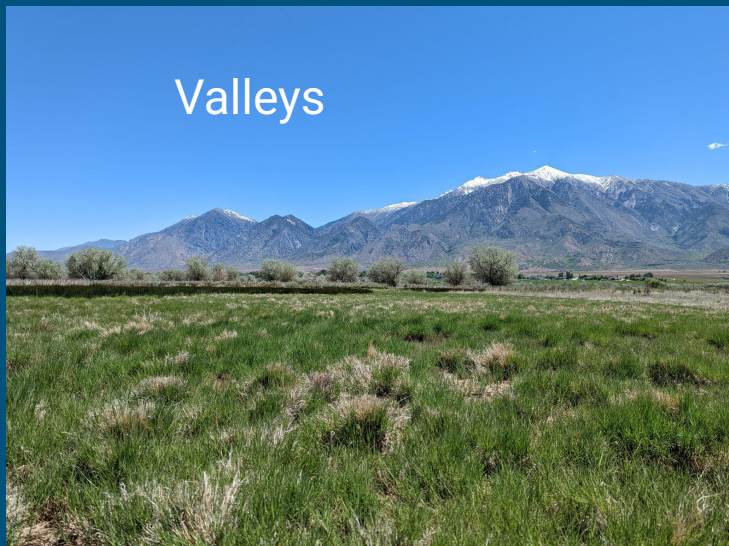
Plateaus



Montane



Subalpine



Valleys



Foothills



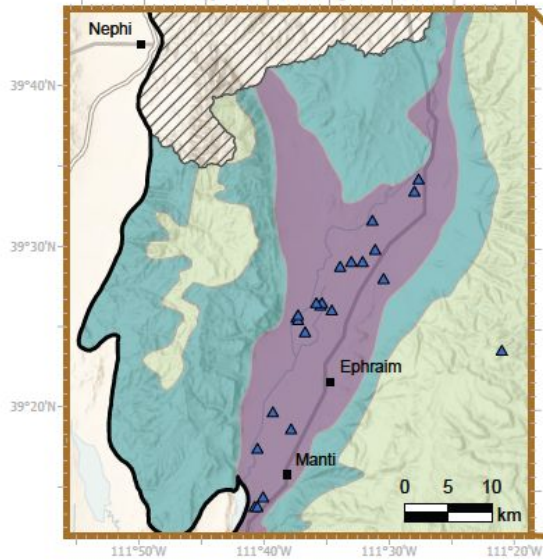






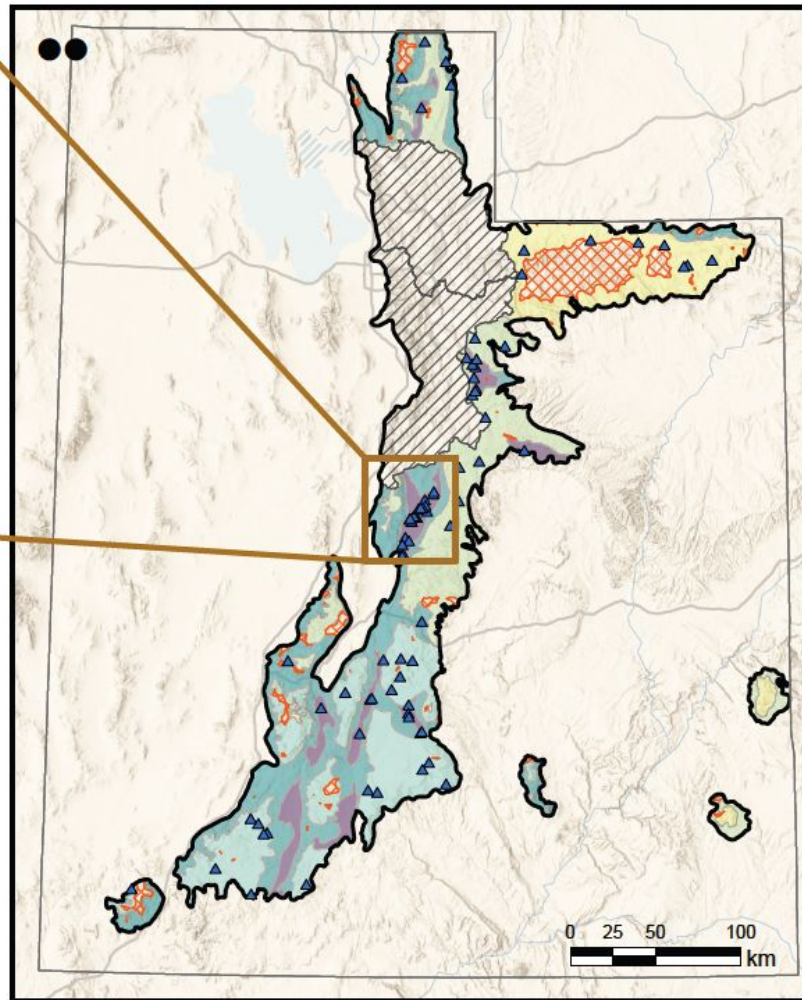


## Sanpete Valley Inset

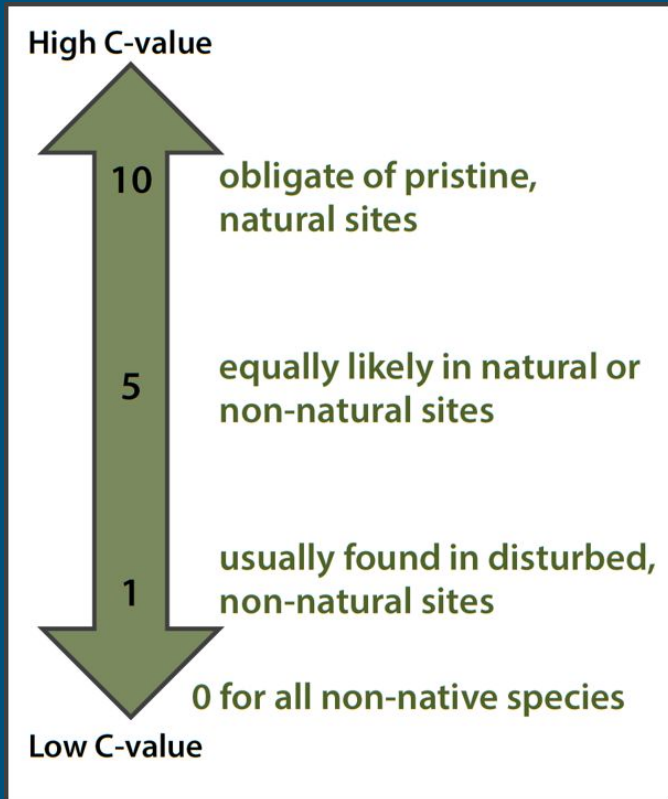


## Explanation

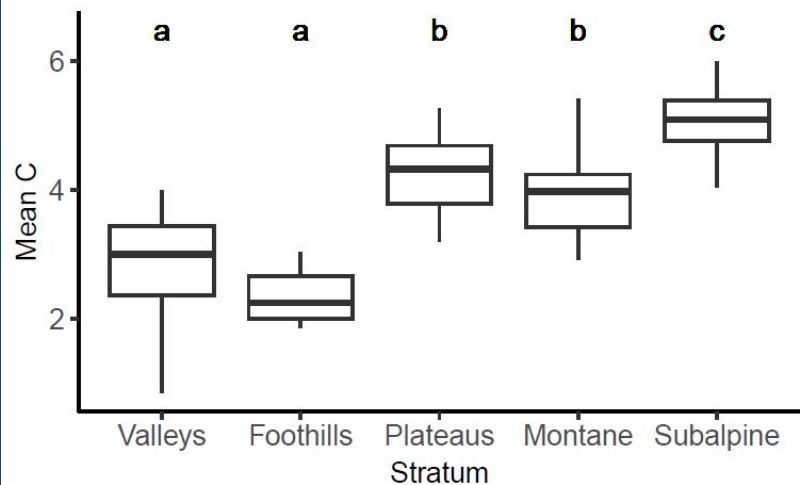
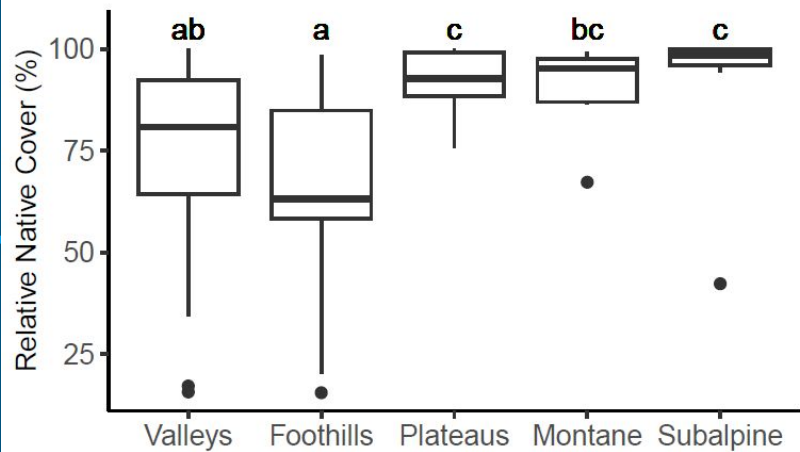
- |                         |               |
|-------------------------|---------------|
| ■ City                  | <u>Strata</u> |
| ▲ Survey site           | Valleys       |
| □ Ecoregional boundary  | Foothills     |
| ▨ Previous study area   | Plateaus      |
| ▤ Area >3 km from roads | Montane       |
|                         | Subalpine     |











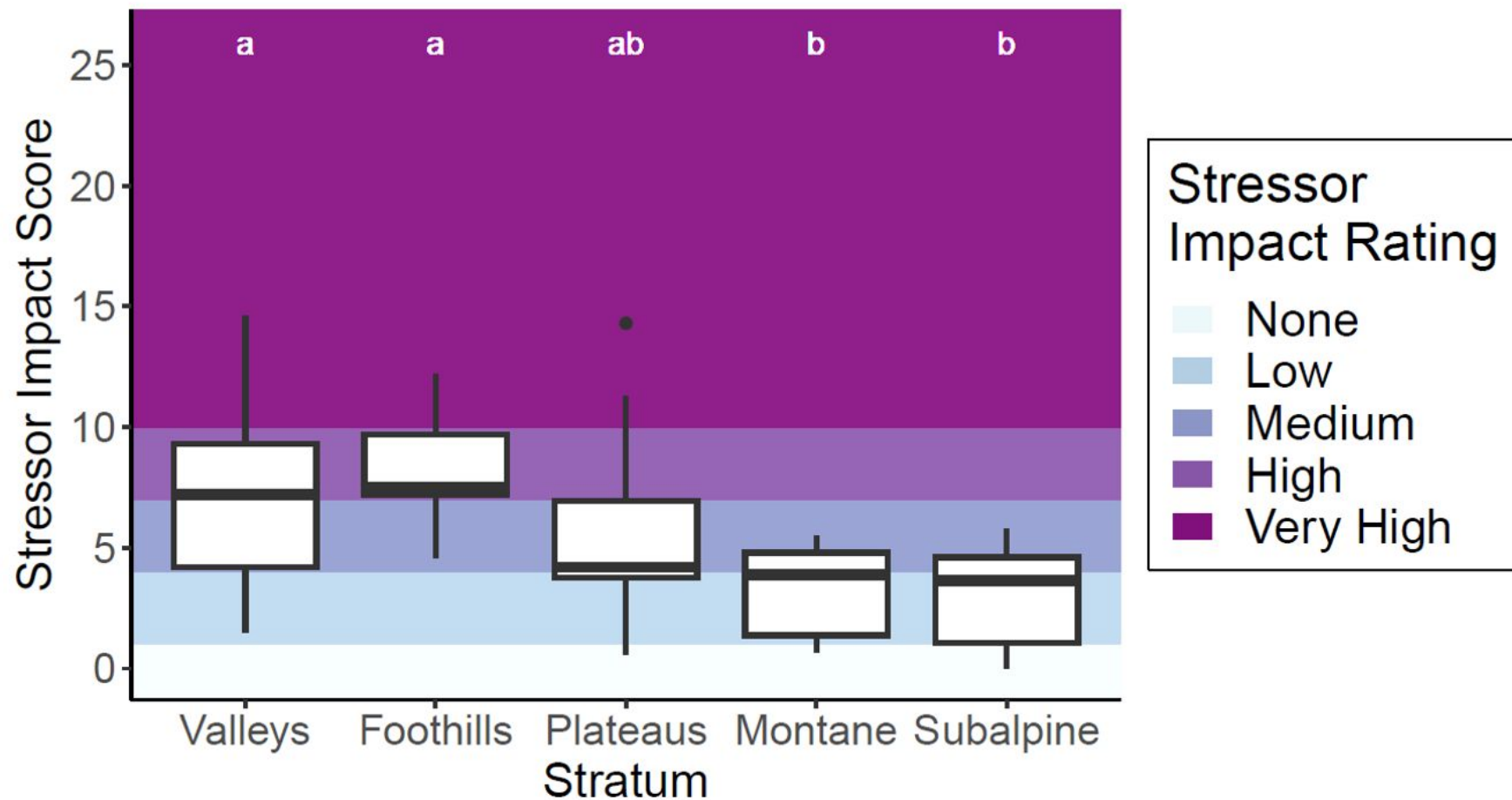


Stressor Impact Calculator		Scope			
		Pervasive = 4	Large = 3	Restricted = 2	Small = 1
Severity	Extreme = 4	10	7	4	1
	Serious = 3	7	7	4	1
	Moderate = 2	4	4	1	1
	Slight = 1	1	1	1	1

Stressor Impact Score	Impact Rating
10+	Very High
7-9.9	High
4-6.9	Medium
1-3.9	Low
0-0.9	Absent

















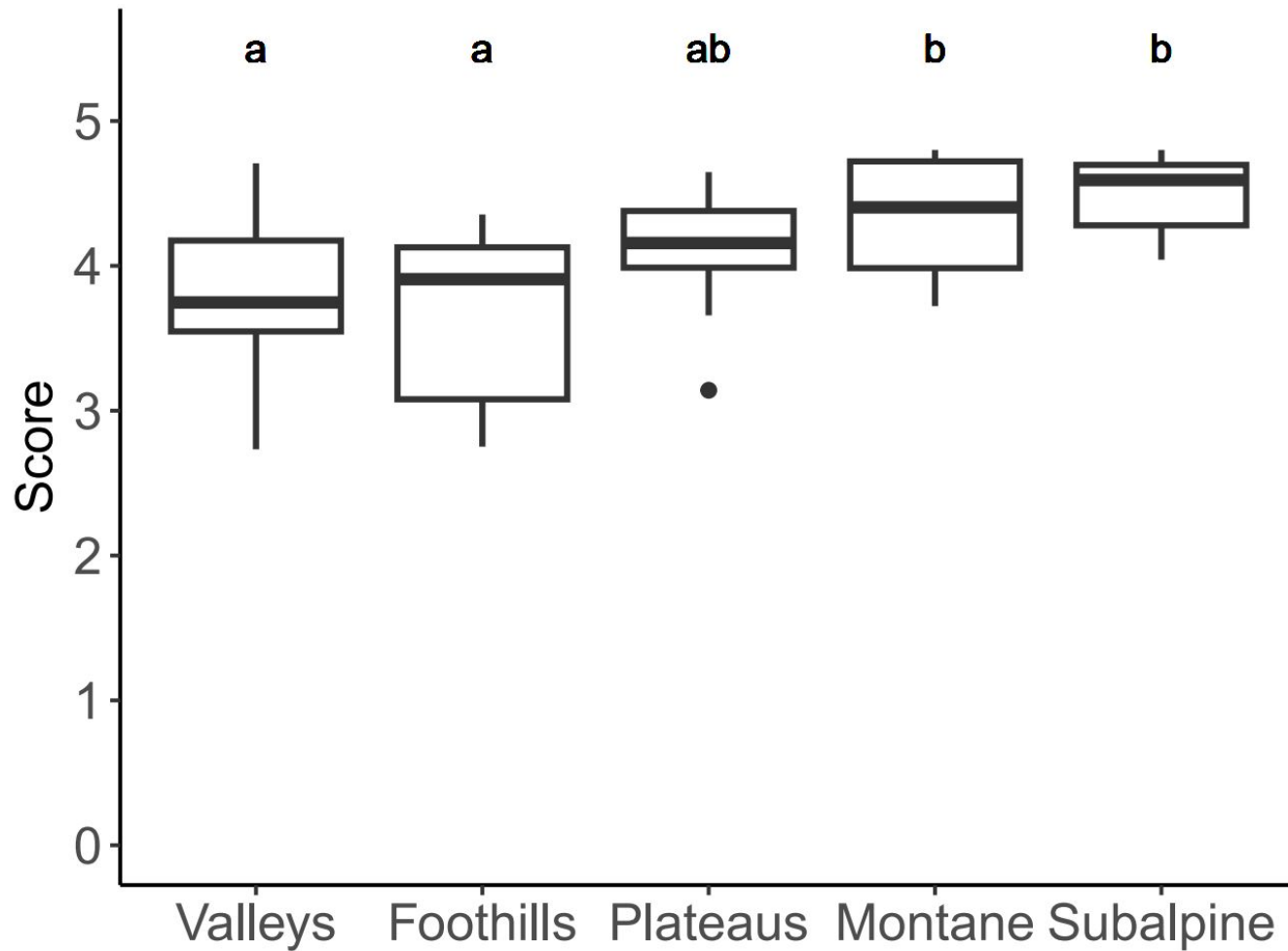




**A****B****C****D**



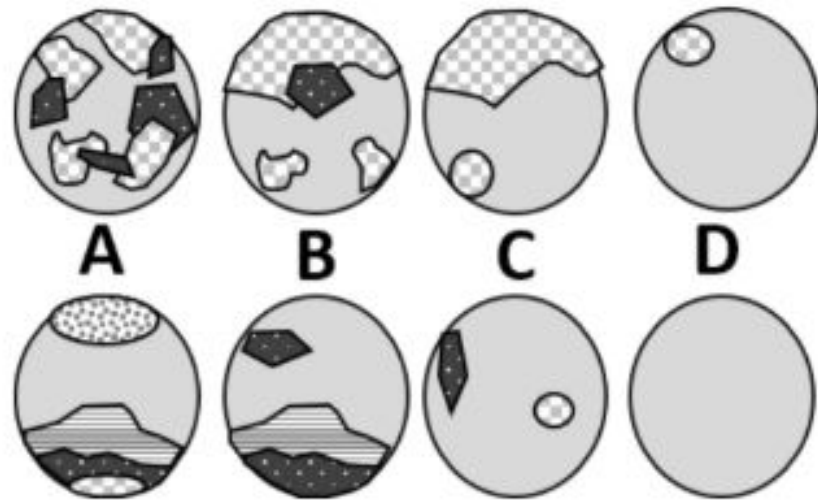
# Overall Condition Score













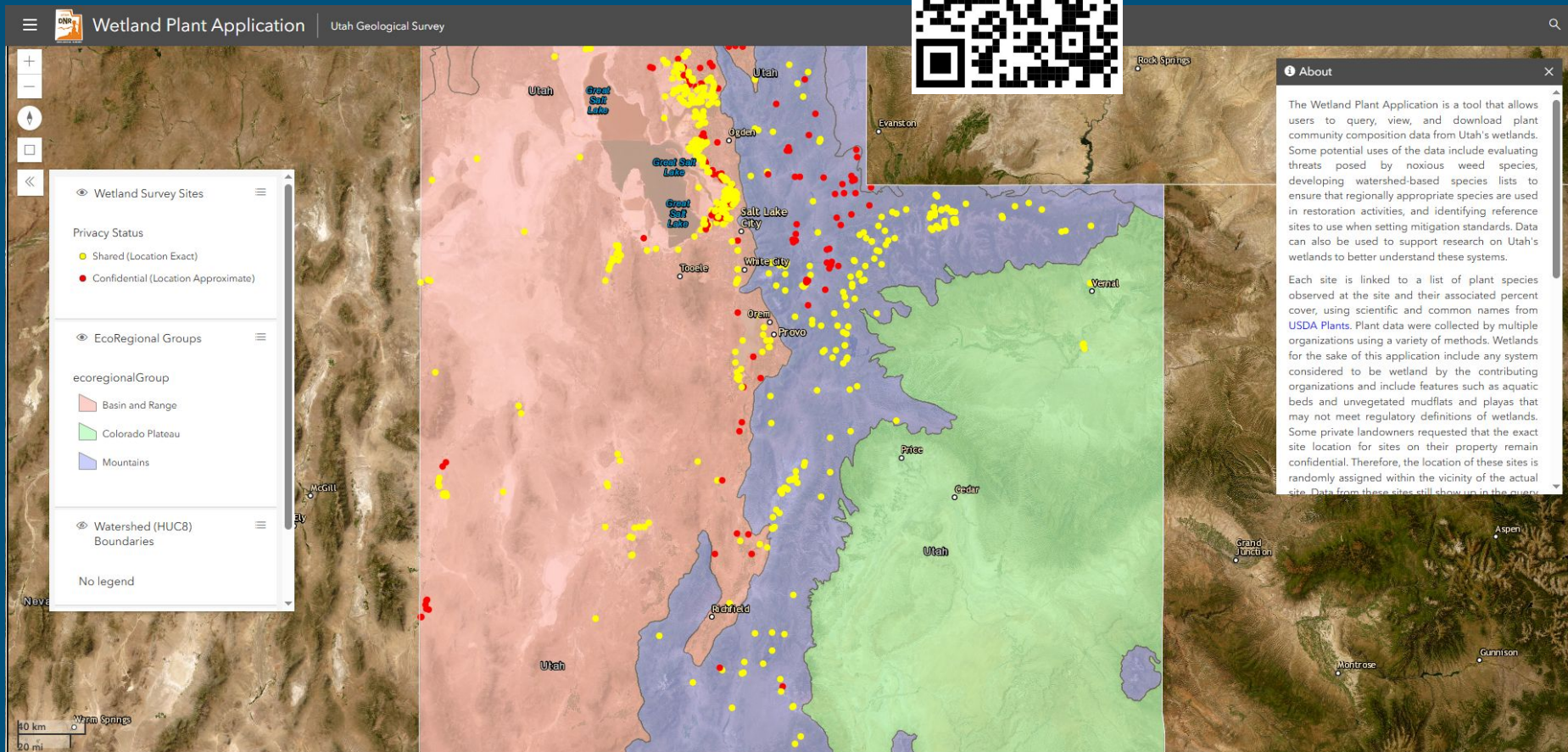
# Storymap

---





# Wetland Plant Application





# Acknowledgements

---

Report co-authors and study design: Diane Menuz, Miles McCoy-Sulentic

Funding provided by a U.S. Environmental Protection Agency Wetland Program Development Grant

A special thanks to the many private landowners who trusted us to work on their property even though we were researching wetlands, which can often be a sensitive topic.



# Questions?

